

# Nautilus Architects

architecture, interiors, landscapes

## *u n d e r c o n s t r u c t i o n . . .*

*The technology of building is constantly evolving, and improving, and we believe that keeping up with the latest products, materials and techniques is the architect's professional responsibility. Although a building will most often be judged on form and space, and an architect's work associated with a look or style, architectural design goes deeper. Threads of quality in building science and construction methodology can span a wide range of appearances. Such is the case with two very exciting projects currently being built. The stark contrast of their finished appearance, at this stage not necessarily evident, speaks directly to the point. In East Haddam, a seasonal cottage on Bashan Lake uses structural insulated panels (SIPs) to create a dramatic, butterfly roof that extends six feet beyond the exterior walls. The shape addresses erosion concerns by capturing rainwater on the steep site and channeling it all to a single downspout. The deep overhangs provide shelter for balconies and all-glass walls, and reduce solar heat gain. The three-story volume has a whole-house fan at the top of the stair tower and will act like a chimney to draw and exhaust warm air from the interior. In the Lyme Hills, another small building is being constructed using insulated concrete forms (ICFs). These were chosen over SIPs as the ideal envelope for this application since the house is embedded in sloping terrain and also because the ICFs are an ideal substrate for the stucco finish. Though it currently resembles a Dunkin Donuts coffee cup, the final appearance will be decidedly traditional, with cedar shake roof, copper gutters, and paned windows. The geothermal heat system and radiant floors, when combined with the ICF shell, will make this house remarkably energy-efficient.*

*Upon completion, the construction methods will be invisible and, stylistically, the buildings will appear entirely unrelated. Perhaps a lesson that beauty is more than skin-deep.*

*– Christopher Arelt, AIA, LEED AP*

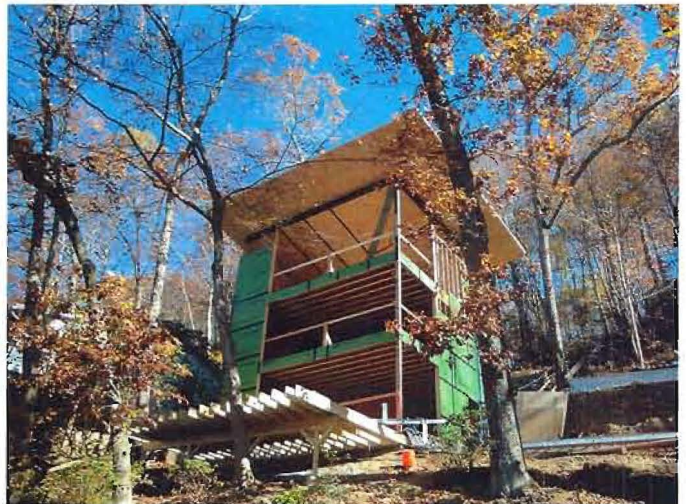
*Be sure to check out our web site for featured projects and updates...*

[www.nautilusarchitects.com](http://www.nautilusarchitects.com)

## Winter 2011 Newsletter



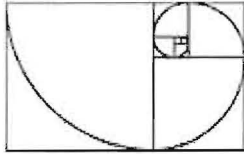
*Bashan Lake House, Moodus, CT*



## *p r e s s . . . . .*

*An article by Chris Arelt on the energy-efficient construction methods being employed on projects currently under construction will appear in the Home section of the Shoreline Times soon. Master bath at a home in the Lyme Hills was featured in the November issue of Better Homes and Garden's REMODEL magazine.*

*LEED: Sustainable design is, well, here to stay. We are proud to announce that Christopher Arelt has earned distinction as a LEED-certified designer by the U.S. Green Building*



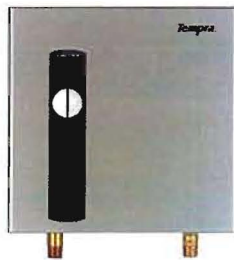
# Nautilus Architects

architecture, interiors, landscapes

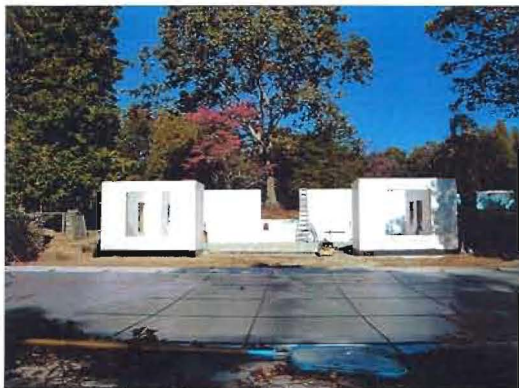
## Winter 2011 Newsletter

### products we like...

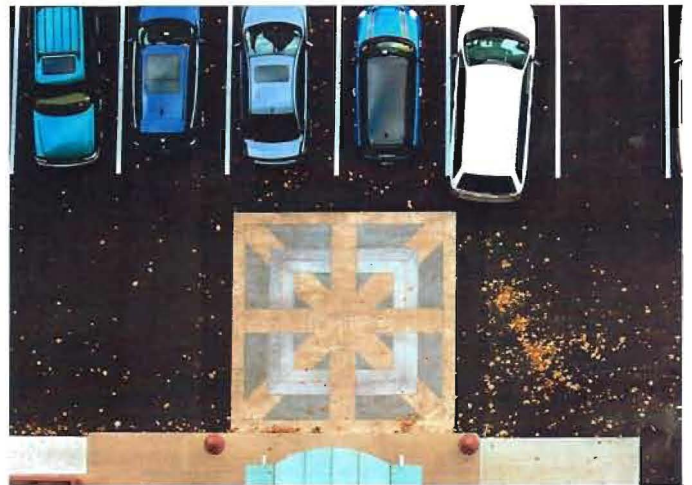
1. *Tankless Hot Water Heater: Hanging on the wall and roughly the size of a washroom's paper towel dispenser, these energy-efficient alternatives to an electric or fuel-fired hot water heater eliminate the need for a standing supply of hot water by creating an on-demand, instantly-heated source. Depending on the size of the house, they can not only provide domestic hot water but also heat the space.*



2. *Whole House Fan: Most often mounted in the floor of an attic space, but also on a roof or sidewall, the whole house fan pulls hot, rising air up and out of a space and provides cooling through ventilation instead of air conditioning.*
3. *Fiber-reinforced Concrete Siding: Available in the form of panels, shingles, or clapboards, these do not rot (like wood) or fade (like vinyl) and offer a superior, long-lasting siding solution for a building that will be painted.*



Lyme Hills, this small building is being constructed using insulated concrete forms (ICFs).



Three different granites were used to create this bold geometric paving pattern at the Eli Apartments in New Haven.

### on the boards.....

Craftsman-Styled renovations and additions to a ranch house in Guilford, including his-and-her studios for a drummer and a painter (model below).



A contemporary facelift for a 200-unit apartment complex in Wallingford uses aluminum-framed, fiber-reinforced concrete panels that vary in color pattern for each building.

An interior on New York's Upper West Side, currently slated to have a new kitchen with steamed beech cabinetry and concrete countertops.